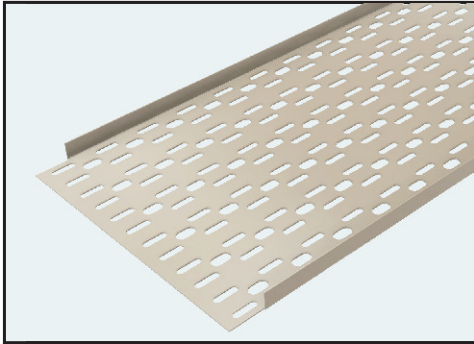
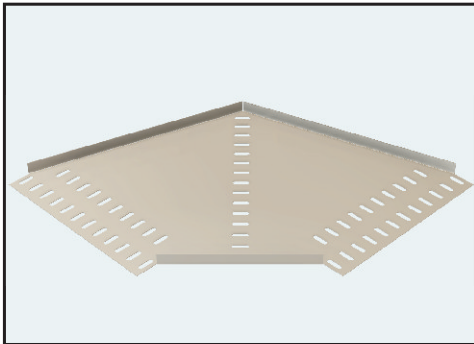


Cable Tray

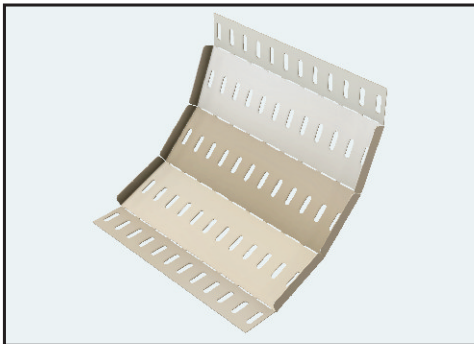
Light Duty Cable Tray



LIT CABLE TRAY STRAIGHT X 3M

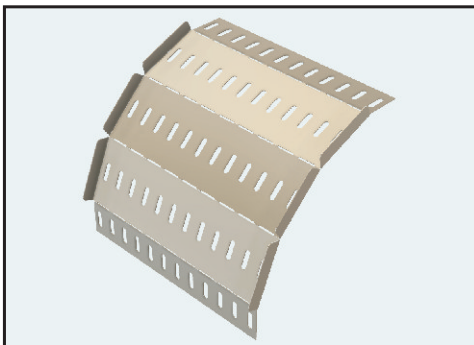


LIT CABLE TRAY HORIZONTAL BEND



LIT CABLE TRAY INTERNAL BEND

USED AS INTERNAL BEND=90°,60°,45°,30°



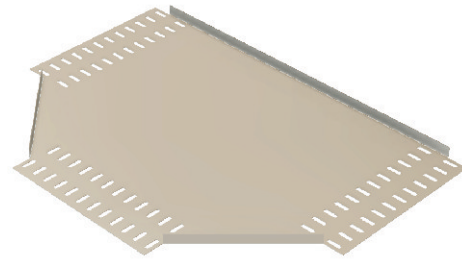
LIT CABLE TRAY EXTERNAL BEND

USED AS EXTERNAL BEND=90°,60°,45°,30°

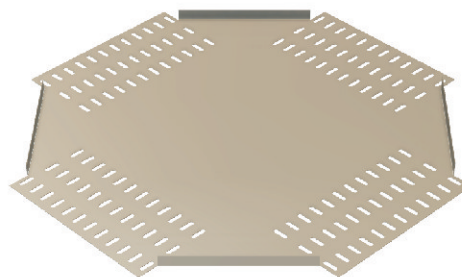
Technical drawing showing dimensions for cable tray: 20x11, 25x7, 25, 50, 25, W, A.

12 mm (W = 50-225 mm)
20 mm (W = 300-900 mm)

Part No:	Finish		W	A
LIT12/50	PG	SS	50 mm	12 mm
LIT12/75	PG	SS	75 mm	12 mm
LIT12/100	PG	SS	100 mm	12 mm
LIT12/150	PG	SS	150 mm	12 mm
LIT12/225	PG	SS	225 mm	12 mm
LIT20/300	PG	SS	300 mm	20 mm
LIT20/450	PG	SS	450 mm	20 mm
LIT20/600	PG	SS	600 mm	20 mm
LIT20/900	PG	SS	900 mm	20 mm



LIT CABLE TRAY TEE



LIT CABLE TRAY 4-WAY

Designed For Your Cable Support Requirements.