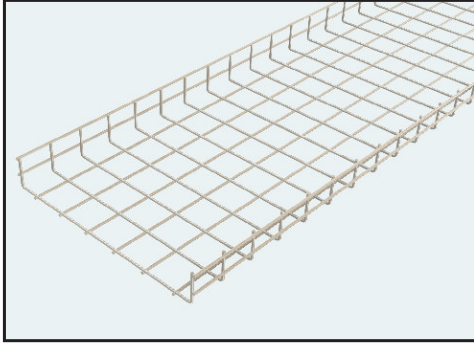
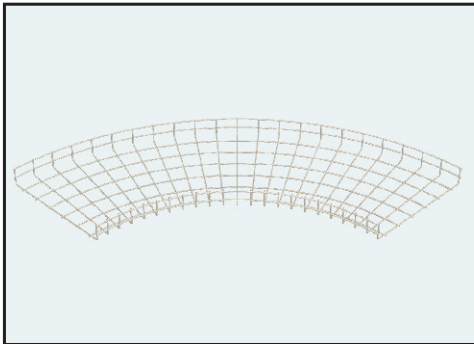


Type - WM Wire Mesh Cable Tray

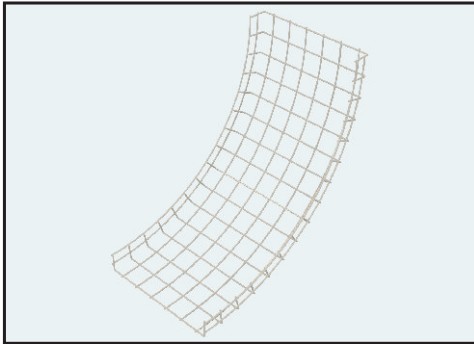
Wire Mesh Cable Tray



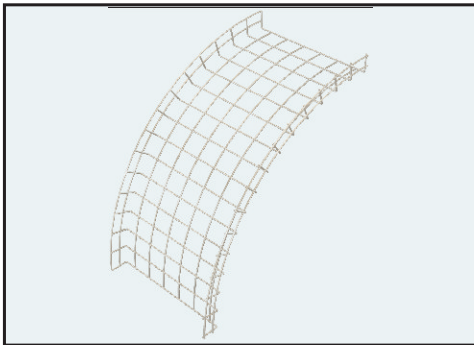
W50/50 CABLE TRAY STRAIGHT X 3M



W50/50 CABLE TRAY HORIZONTAL BEND

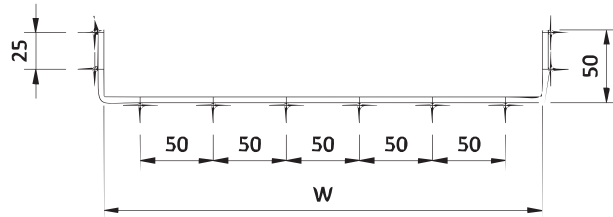


**W50/50 CABLE TRAY INTERNAL BEND
USED AS INTERNAL BEND 90°**

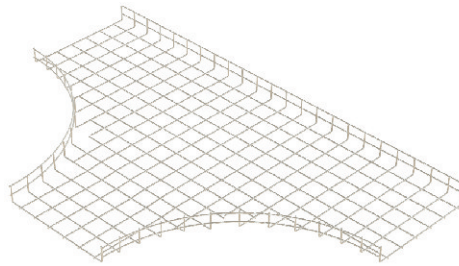


**W50/50 CABLE TRAY EXTERNAL BEND
USED AS EXTERNAL BEND 90°**

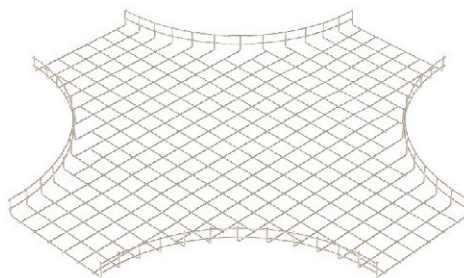
Wire Mesh Section: 3M



Part No:	Finish		W
W50/50	ZP	SS	50 mm
W50/100	ZP	SS	100 mm
W50/150	ZP	SS	150 mm
W50/200	ZP	SS	200 mm
W50/300	ZP	SS	300 mm
W50/400	ZP	SS	400 mm
W50/500	ZP	SS	500 mm
W50/600	ZP	SS	600 mm

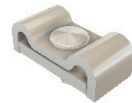


W50 CABLE TRAY TEE



W50 CABLE TRAY 4-WAY

WIRE CONNECTOR SET SPLICE



W50/75 HOLD DOWN SADDLE CLAMP. M6,M8,M10 & M12 (ZP)



CLIP ON SUPPORT 1.2M (PG)

